



Willow Barn, Knowle Lane, Cranleigh, GU6 8JW

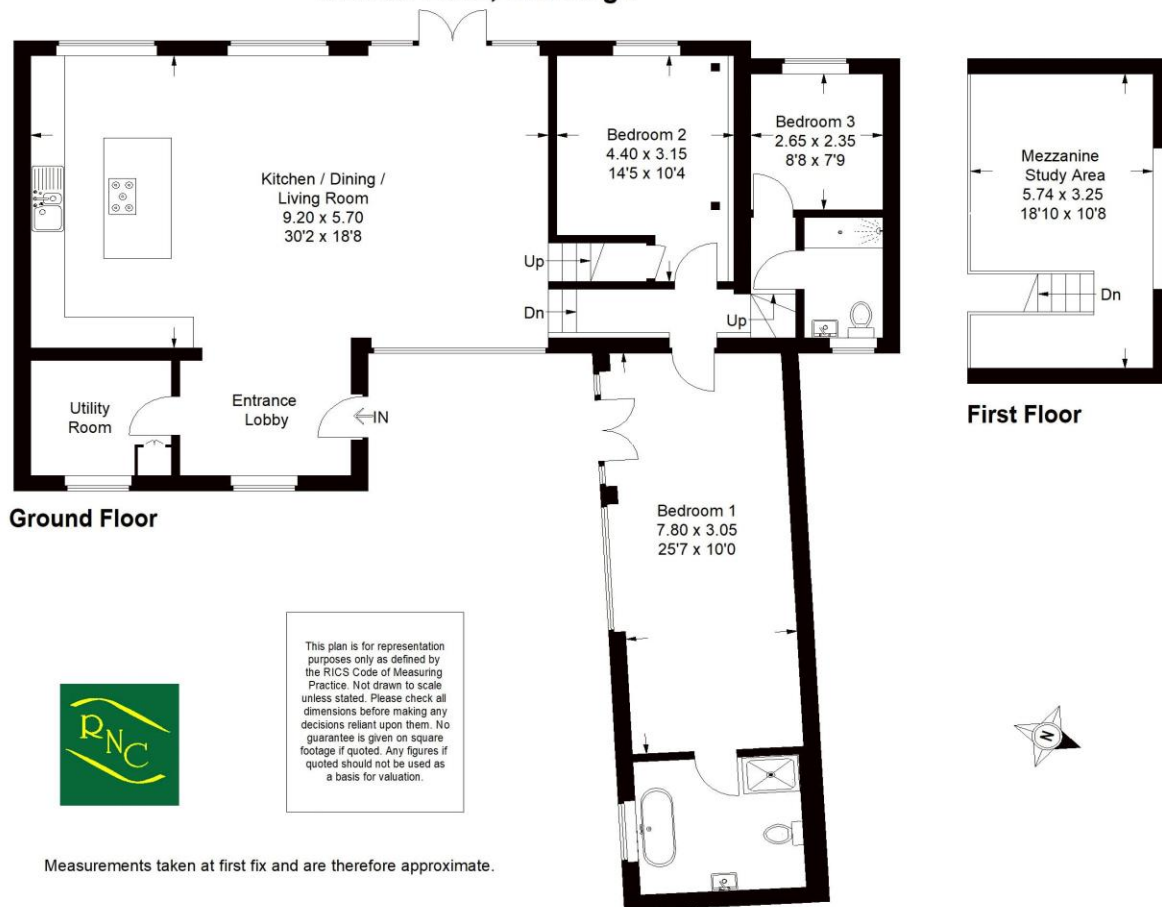
£1,595,000 - Freehold



*** Stunning Period Barn Conversion * Landscaped gardens * Rural views ***
*** High Spec smart/wireless Lutron Lighting system * Principal bedroom with dressing and en-suite ***
*** Magnificent open plan kitchen / living room * Mezzanine study/sitting room ***
*** Electric gated entrance and parking * 10 Year Warranty ***

A truly stunning Grade II listed barn conversion, having just completed a complete redevelopment on the outskirts of Cranleigh enviably positioned with a generous South West facing garden and rural views across adjoining farmland. The thoughtfully planned layout sees this character period building re-imagined for modern living with an air source heat pump running efficient underfloor heating throughout the ground floor. An impressive open plan kitchen/dining/family room enjoying the full drama of the beautiful barn structure. A further mezzanine snug/study area is a really useful space with view over the main hall. The principal bedroom wing includes dressing area and en-suite. Key features of the property include; 10 year warranty. Bespoke kitchen and island unit with stone work surfaces, Siemens and Samsung appliances, Induction hob, Quooker tap. Air source heat pump, underfloor heating. Luxury bathrooms. AV and Data cabling. Sophisticated Lutron smart/wireless lighting system. Karndean flooring.

Knowle Lane, Cranleigh



Important Notice: For clarification, we wish to inform prospective purchasers that these sales particulars have been prepared as a general guide. We have not carried out a detailed survey, nor tested any appliances, equipment, fixtures or services, so cannot verify that they are in working order, or fit for their purpose. Room sizes are approximate. They are taken between internal wall surfaces as indicated on the prepared floor plan.

